



**Full HD WMV9 Digital Signage
Compatible with Windows Media Player 11
Supports FTP Auto Download Function
Supports HTTP Control Function
Supports Schedule Function (optional)**



INTRODUCTION

The Eyezone B1080P-2 is a digital media player that plays movies, music, digital picture and WMV9 from CF memory card without a computer. The Eyezone B1080P-2 supports High Definition movie hardware decode acceleration, presents for you the smoother and clearer picture, it supports high resolution video output such as 1080P / 1080i / 720P for movie theater quality video on a big screen. By connecting to Video, S-Video, Y.Pb.Pr, VGA (resolution up to 1360 x 768), HDMI (1920 x 1080P) and Audio, you can play picture, movie and music on any display device.

What's more, the Eyezone B1080P-2 supports PIR Sensor connector. After sensing approaching subjects, the Eyezone B1080P-2 will play the files automatically.

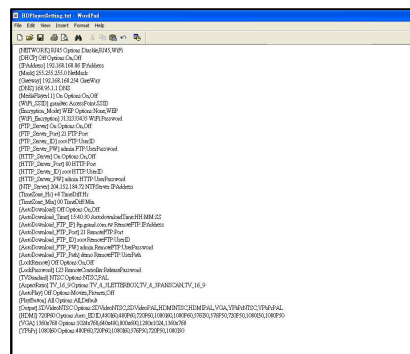
The Eyezone B1080P-2 can connect to a wired network at speed up to 100Mbps. This function provides you with maximum throughput for sharing and transferring digital media.

FEATURES

- Supports multiple file formats : Music, Picture, Movie and HD WMV9.
- Supports Video, S-Video, Y.Pb.Pr, HDMI, VGA and Audio output.
- HD Y.Pb.Pr output supports resolution : NTSC Mode(60Hz) : 480P/ 720P/ 1080i.
PAL Mode(50Hz) : 576P/ 720P/ 1080i.
- HDMI Output : 480P/ 720P/ 1080i/ 1080P.
- VGA output supports resolution : 640x480/ 800x600/ 1024x768/ 1280x1024/ 1360x768.
- Supports RS-232 port for computer control with ASCII command (play, stop, pause...etc).
- **Touch-Sensor Buttons Function (optional):**
 - Press one of the touch-sensor buttons, the B1080P-2 will play the corresponding file automatically.
 - The number of touch-sensor buttons can be customized to 12, 24 or 36 for OEM project.
 - Used with various operating environment (glass, plastics and acrylic material, except metal material), the thickness supports 3mm -5mm, and it can be customized to 5cm for OEM project.
- **PIR Sensor Function (optional):**
 - After sensing approaching subjects, the Eyezone B1080P-2 will play the files automatically.
 - Sensing distance is up to 3 meters with an angle of 45°.
- **Schedule Function (optional):** The B1080P-2 will auto play the designated file at the specify date.
- Connect using an Ethernet network cable at up to 100Mbps.
- The source of HD WMV9 MP@HL (Main Profile / High Level) supports resolution up to 1920x1080 (1080P) and the maximum bit rate is 12Mbps.
- Supports CF memory cards. (Suggest using the high speed (150X) CF card)
- **Supports HTTP Command function.**
- **Supports Auto Key Lock function.**
- **Exports the Configuration Value:** You can export the configuration value to the CF card. The configuration value can be modified on your PC, and can be applied to the B1080P-2 or others.
- **Compatible with Windows Media Player 11:** Play media files stored in a network computer.
- **Supports FTP Auto Download Function:** Connect to Remote FTP server and download data to the CF card automatically.
- **Supports Download Pause / Resume Function:** Continue unfinished downloads upon next session.
- Embedded FTP Server.
- Supports NTP Network (G.M.T) Timer. You can also set the system time manually.
- Supports Universal Plug and Play (UPnP) and DHCP.
- **Supports SLIDE SHOW Function** (interval time with 10/ 15/ 30/ 60 seconds).

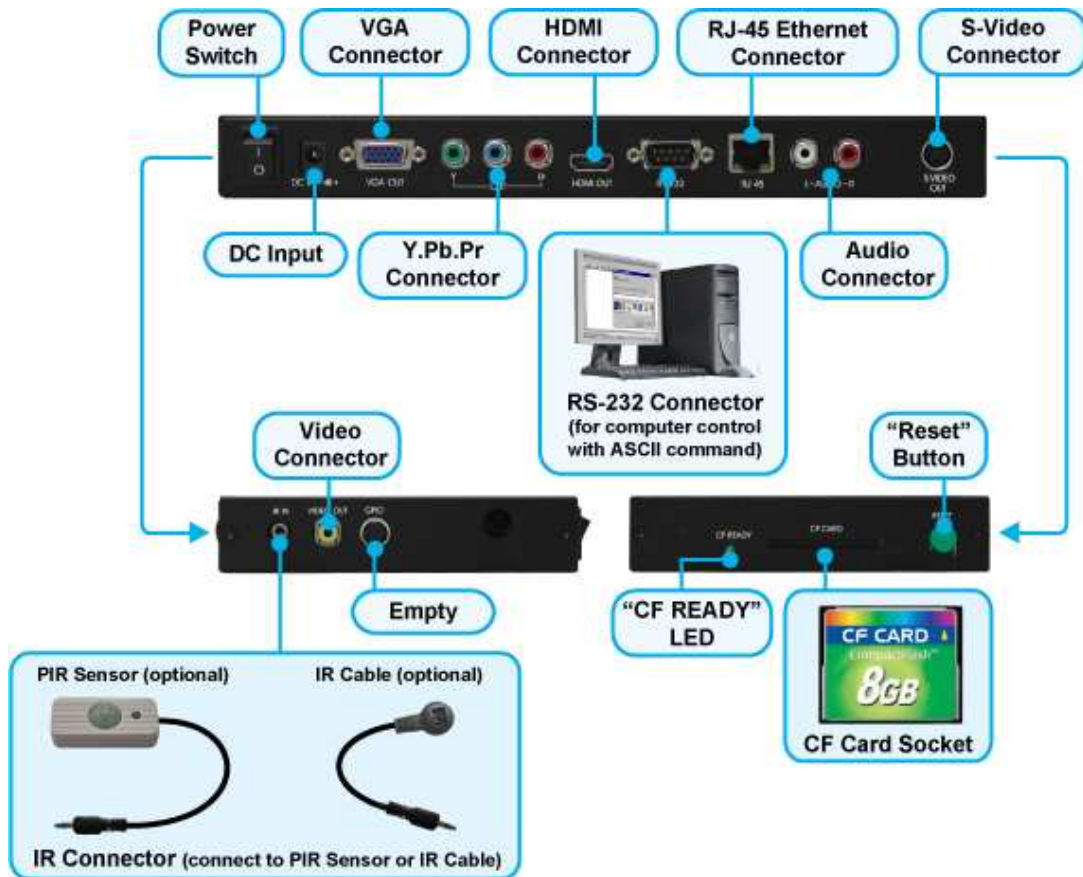


HTTP Command Function



**Exports the Configuration Value
(modify on your PC)**

CONNECTION

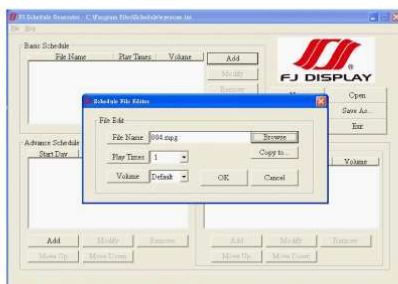


OPTIONAL FUNCTIONS

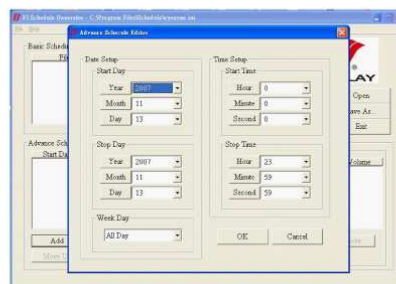
Schedule Function

- The Eyezone B1080P-2 will auto play the designated file at the specify date.
- There are two modes: "Basic Schedule" and "Advance Schedule".
 - Basic Schedule: You can select files that you want to play and set up the play times of each file.
 - Advance Schedule: You can select the files that you want to play, and also can set up the play times and the initial and end time of each file.

Basic Schedule



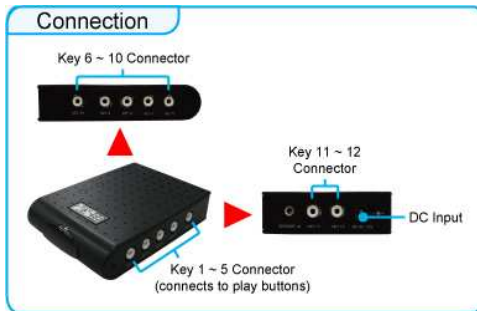
Advance Schedule



OPTIONAL AUXILIARY EQUIPMENT

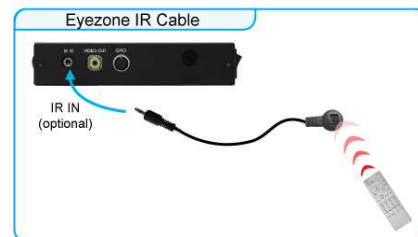
Play Button Box (Eyezone BB)

- The Play Button Box (Eyezone BB) supports up to 12 play-button inputs.
- Press one of the play buttons to play the corresponding file.



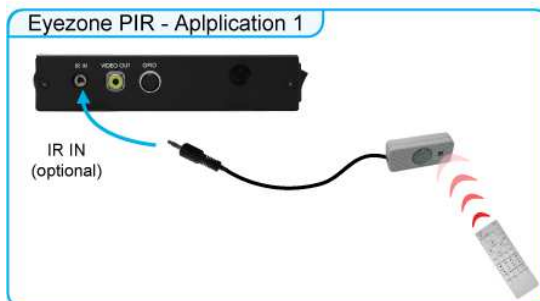
IR Cable

- The IR cable (1 meter) is an external remote control receiver.



PIR Sensor (Eyezone PIR)

- The PIR sensor is not only a motion detector, but also a remote control receiver,
- **Motion Detector**
 - After sensing approaching subjects, the Eyezone B1080P-2 will play the files automatically.
 - Sensing distance is up to 3 meters with an angle of 45



Touch-Sensor Buttons

- There are two modes for transmit signal to the Eyezone B1080P-2: **Wired** and **Wireless**.
- Press one of the touch-sensor buttons, the B1080P-2 will play the corresponding file automatically.
- **Wire Mode:** The distance between Eyezone 1080P-2 and Touch-Sensor buttons can be around 1.5M.
- **Wireless Mode:** The sensing distance is up to 3M.

