

EYEZONE B1080PX-6

User Manual



FCC Notices

It's herewith confirmed to comply with the requirements of FCC Part 15 Rules. Operation is subject to the following two conditions:

- This device may not cause harmful interference.
- This device must accept any interference received, including interference that may cause undesired operation.

Note: This equipment has been tested and found to comply with the limits for a Class B digital device, pursuant to part 15 of the FCC Rules. These limits are designed to provide reasonable protection against harmful interference when the equipment is operated in a residential installation. This equipment generated uses and can radiate radio frequency energy and if not installed and used in accordance with the instruction manual may cause harmful interference to radio communications. However, there is no guarantee that interference will not occur in a particular installation. If this equipment does cause harmful interference to radio of television reception, which can be determined by turning the equipment off or on, the user is encouraged to try to correct the interference by one or more of the following measures:

- Reorient or relocate the receiving antenna.
- Increase the separation between the equipment and receiver.
- Connect the equipment into an outlet on a circuit different from that to which the receiver is connected.
- Consult the dealer or an experienced radio TV technician for help.

CE Declaration

This device complies with CE class B.

| | |
|---------------|----------------|
| EN55022 | IEC 61000-4-4 |
| EN61000-3-2 | IEC 61000-4-5 |
| EN61000-3-3 | IEC 61000-4-6 |
| EN55024 | IEC 61000-4-8 |
| IEC 61000-4-2 | IEC 61000-4-11 |
| IEC 61000-4-3 | |

Printed in Taiwan R.O.C.

All contents are subject to change without notice.

All trademarks are the property of their respective owner.



Jul 06, 10

CONTENTS

| | |
|---|----|
| 1. Package Contents..... | 4 |
| 2. Introduction..... | 4 |
| 3. Features..... | 5 |
| 4. Hardware Overview..... | 6 |
| 5. Remote Control..... | 7 |
| 5.1 Entering Text or IP Address..... | 7 |
| 6. Start the B1080PX-6..... | 8 |
| 7. Setting Up..... | 9 |
| 7.1 Network Setup..... | 9 |
| 7.2 FTP Setup..... | 14 |
| 7.3 Video Setup..... | 16 |
| 7.4 Other Setup..... | 17 |
| 7.5 Scrolling Text Setup..... | 19 |
| 8. Using the B1080PX-6..... | 20 |
| 8.1 Play Media Files on the CF Card..... | 20 |
| 8.2 Synchronized Playback Function..... | 23 |
| 8.3 Multiple Display Zones..... | 25 |
| 8.4 Download Function..... | 26 |
| 8.5 RS-232 Function..... | 29 |
| 8.6 Log Function..... | 30 |
| 9. Http Command Function..... | 31 |
| 9.1 Control..... | 32 |
| 9.2 Network..... | 33 |
| 9.3 Server..... | 34 |
| 9.4 Time..... | 35 |
| 9.5 Features..... | 36 |
| 10. Schedule Function..... | 37 |
| 10.1 Install the Schedule Software..... | 37 |
| 10.2 Start the Schedule Software..... | 38 |
| 10.3 Apply the Schedule on the B1080PX-6..... | 42 |
| 11. Optional Auxiliary Equipment..... | 43 |
| 11.1 Play-Button Box (Eyezone BB)..... | 43 |
| 11.2 IR Cable..... | 43 |
| 11.3 PIR Sensor..... | 44 |
| 11.4 Touch-Sensor Buttons..... | 44 |
| 12. Troubleshooting..... | 46 |

1. PACKAGE CONTENTS

1. B1080PX-6
2. Remote Control
3. CF Card Protective Cover
4. Video & Audio Cable
5. RS-232 Cable (optional)
6. VGA to Y.Pb.Pr Cable (optional)
7. Power Adapter
8. Quick Guide
9. CD Driver
 - Schedule Software
 - IP Detect Tool
 - User Manual



B1080PX-6



Remote Control



CF Card Protective Cover



Video & Audio Cable



RS-232 Cable (optional)



VGA to Y.Pb.Pr Cable (optional)



Power Adapter (DC 12V, 1.5A)



Quick Guide



CD Driver (Schedule Software/ IP Detect Tool/ User Manual)

2. INTRODUCTION

The Eyezone B1080PX Series is a high-class Digital Signage with high-end performance (40Mbps). The advanced technology provides the smoothest and clearest image for playing advertising contents. The B1080PX-6 is a full HD digital signage that plays media files from CF memory card without a computer. The media files can be automatically updated at the specific time from an FTP server.

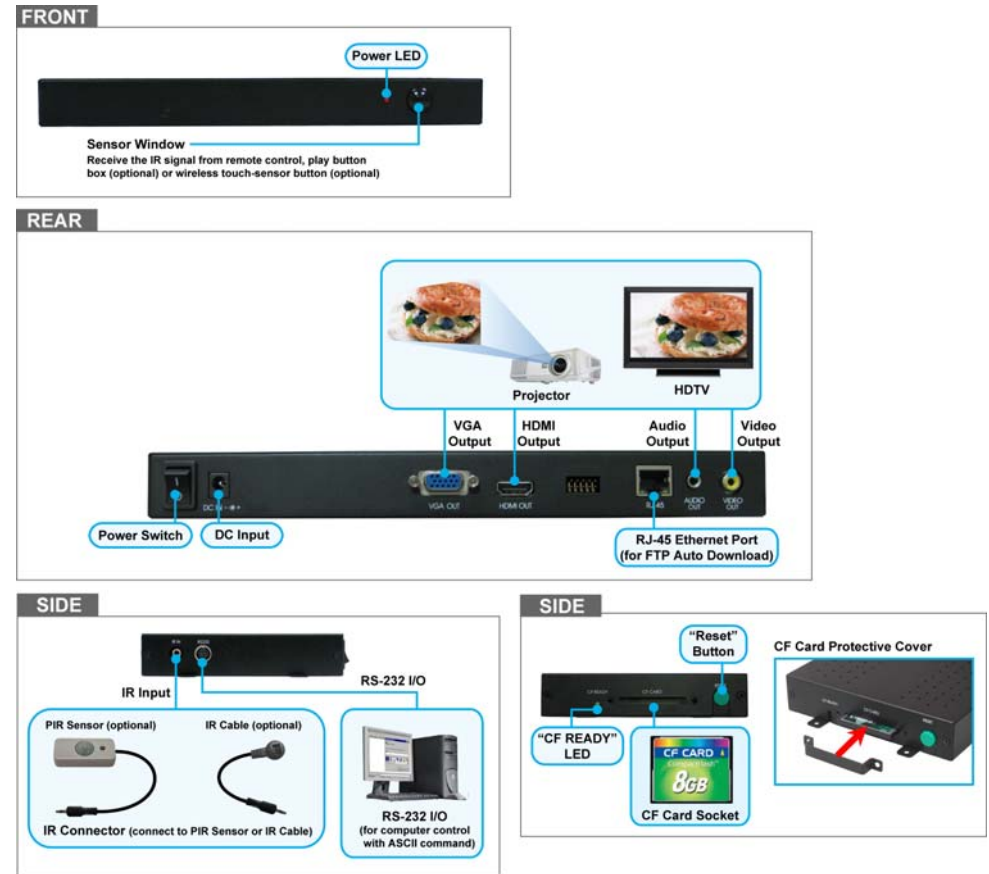
The B1080PX-6 supports synchronized playback function that enables you to synchronize multiple B1080PX-6 using the Ethernet (video wall application). What's more, the B1080PX-6 supports multiple display zones, you can play movie, picture and scrolling text on the screen simultaneously, and the text color can be changed (white/ yellow/ green).

By connecting to Video, Y.Pb.Pr, VGA (resolution up to 1360 x 768), HDMI (1920 x 1080P) and Audio, you can play the media files on any display device for advertising, presentations, training and other media applications.

3. FEATURES

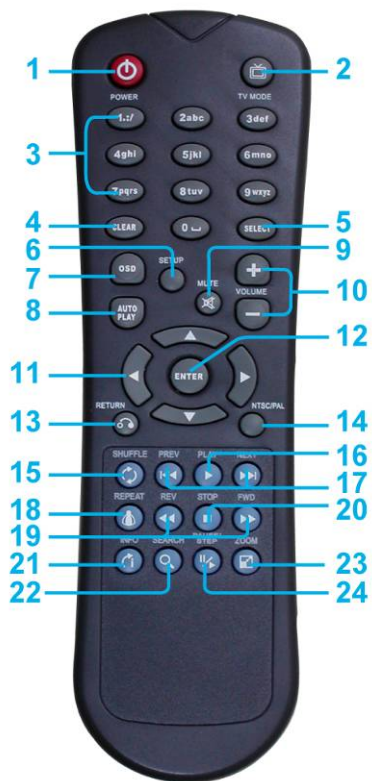
- High-performance and high stability: With the same resolution and bit rate as Blu-ray players'.
- The source of HD WMV9 MP@HL (Main Profile / High Level) supports resolution up to 1920x1080 (1080P) and the maximum bit rate is 40Mbps.
- Supports multiple file formats: WMV9 and WMA.
- Supports Video, Y.Pb.Pr (optional VGA to Y.Pb.Pr cable), HDMI, VGA and Audio output.
- HDMI Output: 480P/ 720P/ 1080i/ 1080P.
- HDMI 1.1, 1.2 and 1.3 compliant.
- VGA output supports resolution: 640x480/ 800x600/ 1024x768/ 1280x1024/ 1360x768/ 1680x1050/ 1920x1080/ 1920x1200.
- Supports RS-232 port for computer control with ASCII command (play, stop, pause...etc).
- **Synchronized Playback Function:** Synchronize up to 254 units using the Ethernet (on the same subnet).
- Supports Multiple Display Zones: Displays the movies, picture (supports png format/ size: 213x641/ 96DPI) and scrolling text on the screen simultaneously.
- The display speed of scrolling text can be adjusted, and scrolling text supports multi languages (Latin1/ Latin2/ Japanese/ Greek).
- Schedule Function: The B1080PX-6 will auto play the specific file at the specific date.
- Supports Log Function which can record the file and time that was be played.
- Connect using an Ethernet network cable at up to 100Mbps.
- Supports CF memory cards. (Suggest using the high speed (150X) CF card)
- Supports HTTP Control Function
- Supports Auto Key Lock Function
- Exports the Configuration Value: You can export the configuration value to the CF card. The configuration value can be modified on your PC, and can be applied to the B1080PX-6 or others.
- Supports FTP Auto Download Function: Connect to Remote FTP server and download data to the CF card automatically.
- Play files and FTP Auto Download Simultaneously: The B1080PX-6 can play files while downloading.
- Embedded FTP Server.
- Supports NTP Network (G.M.T) Timer.
- Supports Universal Plug and Play (UPnP) and DHCP.
- Supports SLIDE SHOW Function.
- **Bundle Remote Management Software (POP Center)**
 - Standard Version (free): Manage 5 B1080PX
 - Professional Version (need charge): Manage up to 100 B1080PX.
 - Upload contents
 - Schedule playlists
 - Set multi-display modes
 - Monitor status and log files of each B1080PX

4. HARDWARE OVERVIEW



- **Power Switch:** Toggle between main power on & off.
- **DC Input:** For the power adapter. (DC 12V / 1.5A)
- **VGA Output:** Connects to devices that support VGA input. (LCD 、 projector)
- **HDMI Output:** Connects to devices that support HDMI input.
- **RJ-45 Ethernet Connector:** Connects to router or PC by RJ-45 Cable.
- **Audio Output:** Connects to sound input. (HDTV with amplified speaker)
- **Video Output:** Connects to devices that support Video input. (HDTV 、 projector)
- **IR Input:** Connects to PIR Sensor (optional) or IR Cable (optional).
- **RS-232 Connector:** Used for computer control with ASCII command.
- **"CF READY" LED:** Steady green confirms that the CF card is inserted correctly.
- **CF Card Socket:** For CF memory card.
- **"RESET" Button:** To restart the B1080PX-6.

5. REMOTE CONTROL



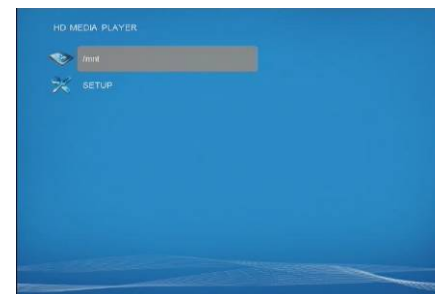
- 1 Power on/ off
- 2 Select the output mode
- 3 Numeric Key
- 4 Delete last entry
- 5 Select a function or to play the selected file
- 6 Open the setup menu Mute sound
- 7 OSD display function on/ off
- 8 Auto-play function on/ off
- 9 Mute sound
- 10 Volume up/ down
- 11 Move the cursor
- 12 Confirm the selection/ entry
- 13 Go back one layer
- 14 Select the TV type (NTSC/ PAL)
- 15 Shuffle on & off
- 16 Play the file selected
- 17 View the previous/ next file
- 18 Select the repeat mode
- 19 Rewind/ forward movie or music files
- 20 Stop playback
- 21 Show the information of the file selected
- 22 Search video (movie) timeframe
- 23 Zoom in/ out on the movie or picture
- 24 Pause the playback or play frame by frame

5.1 ENTERING TEXT OR IP ADDRESS

- Keys need to be pressed multiple times to enter the letter corresponding to that key.
For Example: To enter the letter “a”. You would press the button “2” twice.
- **Enter The IP Address**
For Example: To enter the IP address”192.168.100.100”.
- Step 1:** Press “1” once, then “1” is displayed, and the color of “1” is orange.
- Step 2:** When the color of “1”turns white, press “9” once, then “9” is displayed.
- Step 3:** Repeat steps 1 and 2 to enter and complete the IP address.

6. START THE B1080PX-6

- **Power On**
 - Insert the CF memory card that has Picture, Music, Movie or WMV9 files.
 - Press the “POWER” button to power on the B1080PX-6, and then press the “TV MODE” button to select the output mode.
- **Status After Power On**
 - **Status 1:** If the “AUTOPLAY (Movie/ Picture/ All Files/ MultiLayer)” function is enabled and there are media files on the CF card or the B1080PX-6 is already connected to the display device, the B1080PX-6 will auto play media files after power on.
 - **Status 2:** If the “AUTOPLAY” function is disabled, after power on the main menu will appear as shown in the following figure. There are two groups in the main menu (“mnt/CF” and “SETUP”).



- **Power Off:** Press the “POWER” button again to power off.

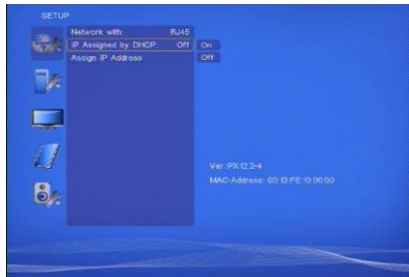
7. SETTING UP

- In the main menu, using the “▼” button on remote control to select the “**SETUP**” item, and then press the “ENTER” button. You will be presented with the B1080PX-6 settings screen.
- You can also press the “**SETUP**” button on remote control to directly open the settings screen. (If there is file that is being play, please stop first.)
- There are five groups of sub-menu in the main menu (“Network Setup”, “FTP Setup”, “Video Setup”, “Other Setup” and “Scrolling Setup”).
- In the settings screen, you can use the “▲、▼、◀、▶” buttons to select an item, and press the “ENTER” button to confirm the selection.
- Press the “**SETUP**” button on remote control to save and quit the settings screen.



7.1 NETWORK SETUP

7.1.1 Setting the Network from the OSD Menu



- **Network with:** Select your network connection Disable/ RJ45.
- **IP Assigned by DHCP:** If you have a DHCP-enabled router, please select “On”, and then the router will automatically assigns an IP address to the B1080PX-6. If you don’t have a DHCP –enabled router, select “Off” and type the network information in “**Assign IP Address**”.

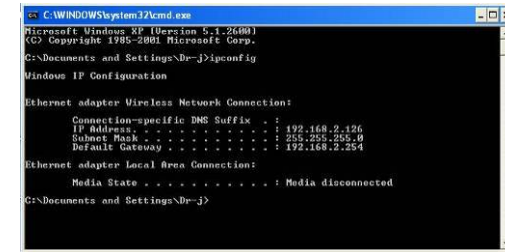
- **Assign IP Address:** If the B1080PX-6 is connected to a network without a DHCP server or you want to use Local FTP Server function, enter the fixed IP address, Mask, Gateway and DNS for the B1080PX-6.

PS. Refer to 5.1 for how to enter IP address by remote control.

NOTE: Before setting the IP address, Mask, Gateway and DNS, check the network information of your PC. Please follow the steps below to get the network information of your PC.

Step 1: Click on “Start” → “Run” and type in “command”, then press “ENTER”.

The MS-DOS window will appear, type in “ipconfig” and then press “ENTER” to get the network information.



Step 2: Assign IP Address, Mask (Subnet Mask) and Gateway (Default Gateway) for the B1080PX-6.

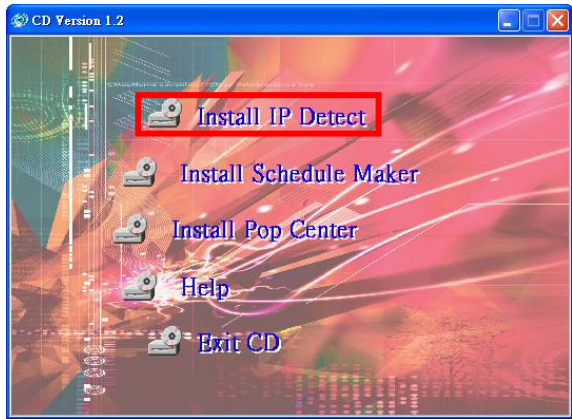
Enter the same values of the Subnet Mask and Gateway, and be careful not to enter the values of IP address that are already used by other devices on the network.

7.1.2 Setting the Network from the IP Detect Tool

With the bundle tool “IP Detect”, user could search B1080PX-6 on the local area network. User could also change the IP setting via this tool. For example, user might assign a static IP to B1080PX-6 by the steps as below:

Step1: Insert the driver CD into your CD-ROM drive, then the autorun function will start up the shell program. If the autorun window does not display, please execute the Autorun.exe program to bring out the autorun screen.

Step2: Click on the **Install IP Detect** to install the IP detect tool.



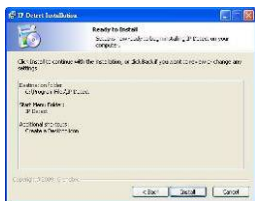
Click **Next** to continue



Select the installation folder and click **Next** to continue



Create a desktop icon and click **Next** to continue




Click **Install** to start the installation



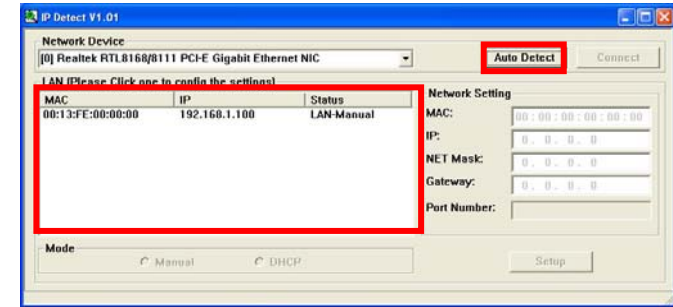
Installing



Click **Finish** to complete the installation

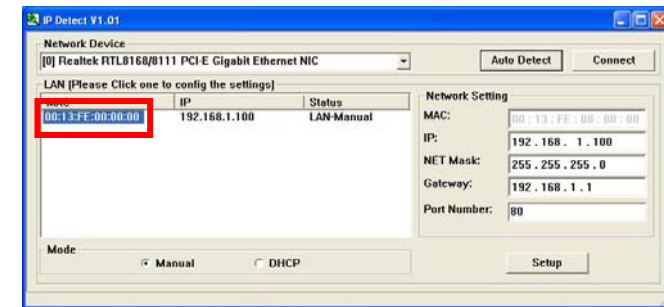
Step3: Double click on the  icon to start the tool.

Step4: Click on the “Auto Detect” button, then the tool will show all available B1080PX-6 in the local area network.

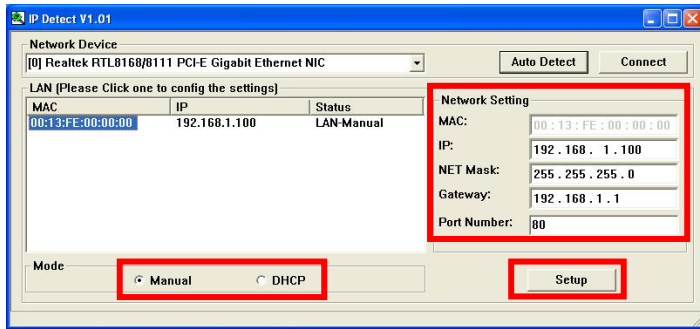


NOTE: When use B1080PX-6 under a DHCP-enabled network, user sometimes does not know which IP address is assigned to B1080PX-6. User could also use this tool as a “Finder”, for locating the IP address of B1080PX-6. By pressing the “Connect” button, IE browser will show up and access to the build-in web of B1080PX-6 automatically.

Step5: Select the B1080PX-6 that you want to configure (by identifying the MAC address).

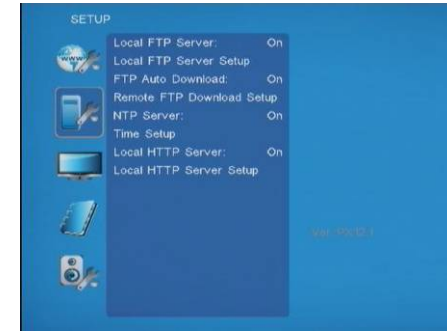


Step6: The default IP mode of B1080PX-6 is DHCP. User should change the mode to “Manual”, if he wants to assign a static IP address to B1080PX-6. Then enter the preferred “IP”, “Net Mask” and “Gateway” in the “Network Setting”. Finally, click on the “Setup” button for completing the setting.

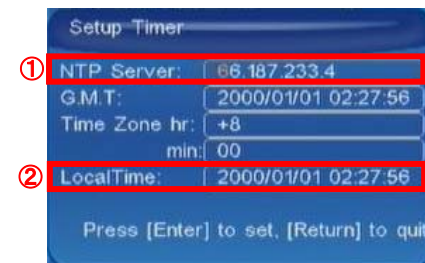


NOTE: The IP setting will not show on the OSD menu instantly, but it should be available after pressing “Setup” button. The prefer IP address will show on the OSD menu when B1080PX-6 restart.

7.2 FTP SETUP



- **Local FTP Server:** Turn on/ off the B1080PX-6 server.
(If you use the B1080PX-6 server, please disable the DHCP function and input a fixed IP address, Mask, Gateway and DNS of the B1080PX-6)
- **Local FTP Server Setup:** Set the “Port”, “User ID” and “Password” of the B1080PX-6.
(The Default Port: 21, User ID: root, Password: admin)
- **FTP Auto Download:** Enable/ Disable the FTP auto download function.
- **Remote FTP Download Setup**
 - **Server IP:** Enter the domain name or IP address of the FTP as was given to you by your Web hosting provider.
 - **Port:** The default port for FTP is 21. In most cases you should not change this number. If the FTP site uses a port other than 21, you should enter the correct port.
 - **User ID:** Enter the user name of the Remote FTP server.
 - **Password:** Enter the Password of the Remote FTP server.
 - **FTP Path:** Enter the folder path that you want to share.
- **NTP Server:** Enable/ Disable the NTP server function. (if the B1080PX-6 isn't connect to internet, please disable the NTP Server function)
- **Time Setup:** Set the **NTP Server** and **Local Time** here.



- ① **NTP Server** (the B1080PX-6 must be already connected to the network)
 - NTP Server: Enter the NTP server IP address like: 204.152.184.72.
 - G.M.T: After B1080PX-6 get the time from NTP server, it will update the G.M.T field.
 - Time Zone: Use the **Volume +, -** and **Numeric Key** to set the time zone of your location.
(time zone must be set properly for the **Auto-Download** and **Schedule** functions)

NOTE: GMT and applied regions

| Time Zone | Region |
|-------------|--|
| (GMT-12:00) | Eniwetok, Quazalen |
| (GMT-11:00) | Midway, Ireland, Samoa |
| (GMT-10:00) | Hawaii |
| (GMT-09:00) | Alaska |
| (GMT-08:00) | Pacific GMT (U.S. & Canada); Tijuana |
| (GMT-07:00) | Continental GMT (U.S. & Canada) |
| (GMT-07:00) | Arizona |
| (GMT-06:00) | Mexico city |
| (GMT-06:00) | Saskatchewan |
| (GMT-06:00) | Eastern Coast GMT (U.S. & Canada) |
| (GMT-06:00) | Indiana (Eastern Coast) |
| (GMT-04:00) | Atlantic GMT (Canada) |
| (GMT-04:00) | Santiago |
| (GMT-04:00) | Caracas, La Paz |
| (GMT-04:00) | Newfoundland |
| (GMT-03:00) | Greenland |
| (GMT-03:00) | Buenos Aires, Georgetown |
| (GMT-03:00) | Brasilia |
| (GMT-02:00) | Mid-Atlantic |
| (GMT-01:00) | Capo Verde Is. |
| (GMT-01:00) | Azores |
| (GMT-00:00) | Greenwich GMT; Dublin, Edinburgh, Lisbon, London |
| (GMT-00:00) | Casablanca, Monrovia |
| (GMT+01:00) | Beograd, Bratislava, Budapest, Ljubljana, Prague |
| (GMT+01:00) | Brussels, Copenhagen, Madrid, Paris |
| (GMT+01:00) | Sarajevo, Skopje, Sofia, Vilnius, Warsaw, Zagreb |
| (GMT+01:00) | Midwest Africa |
| (GMT+01:00) | Amsterdam, Berlin, Bern, Rome, Stockholm, Vienna |
| (GMT+02:00) | Bucharest |
| (GMT+02:00) | Athens, Istanbul, Minsk |
| (GMT+02:00) | Jerusalem |
| (GMT+02:00) | Cairo |
| (GMT+02:00) | Harare, Pretoria |

| Time Zone | Region |
|-------------|--------------------------------------|
| (GMT+02:00) | Helsinki, Riga, Tallinn |
| (GMT+03:00) | Nairobi |
| (GMT+03:00) | Moscow, Saint Petersburg, Volgograd |
| (GMT+03:00) | Baghdad |
| (GMT+03:00) | Kuwait, Raid |
| (GMT+03:30) | Tehran |
| (GMT+04:00) | Baku, Tbilisi, Ere van |
| (GMT+04:00) | Abu Dhabi, Muscat |
| (GMT+04:30) | Kabul |
| (GMT+05:00) | Yekaterinburg |
| (GMT+05:00) | Islamabad, Karachi, Tashkent |
| (GMT+05:30) | Calcutta, Chennai, Mumbai, New Delhi |
| (GMT+05:45) | Katmandu |
| (GMT+06:00) | Sri Jayewardenepura Kotte |
| (GMT+06:00) | Astana, Dakar |
| (GMT+08:00) | Irkutsk, Ulan Bator |
| (GMT+08:00) | Kuala Lumpur, Singapore |
| (GMT+08:00) | Taipei |
| (GMT+08:00) | Perth |
| (GMT+09:00) | Seoul |
| (GMT+09:00) | Yakutsk |
| (GMT+09:00) | Osaka, Sapporo, Tokyo |
| (GMT+09:30) | Darwin |
| (GMT+09:30) | Adelaide |
| (GMT+10:00) | Guam, Port Moresby |
| (GMT+10:00) | Brisbane |
| (GMT+10:00) | Vladivostok |
| (GMT+10:00) | Canberra, Melbourne, Sydney |
| (GMT+10:00) | Hobart |
| (GMT+11:00) | Magadan, Solomon Is., New Caledonia |
| (GMT+12:00) | Auckland, Wellington |
| (GMT+12:00) | Fiji, Kamchatka Pen., Marshall Is. |
| (GMT+13:00) | Nuku'alofa |

② **Local Time:** Set the system time manually.

NOTE: If the NTP Server and Local Time have been set, the NTP Server will be the first priority (the B1080PX-6 is already connected to the network).

- **Local HTTP Server:** Enable/ Disable the HTTP command function.
- **Local HTTP Server Setup:** To set the “Port”, “User ID” and “Password” of the B1080PX-6. (The Default Port: 80, User ID: root, Password: admin)

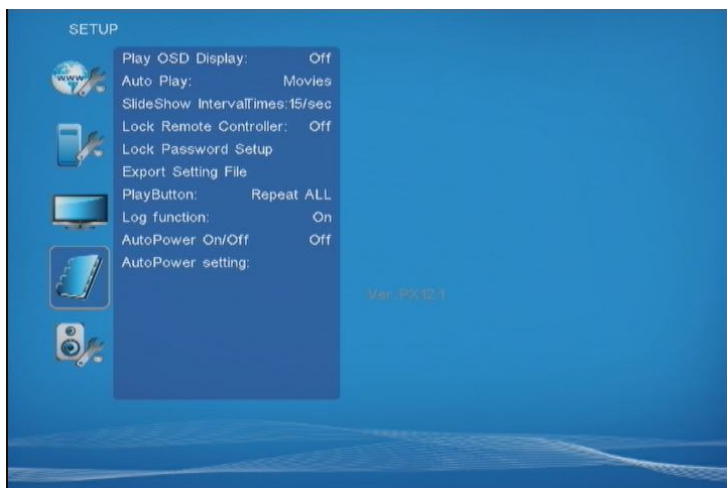
NOTE: Press the “SETUP” button on the remote control to save the settings, and it will auto exit the settings screen, then restart the B1080PX-6.

7.3 VIDEO SETUP

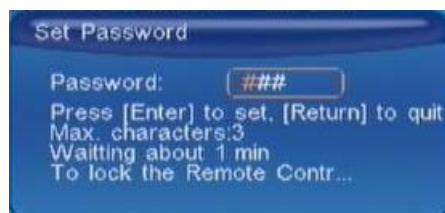


- **TV Standard:** Select the output TV video format (NTSC / PAL).
- **NTSC Active Output:** Select the output mode. (HDMI/ SD Video/ VGA/ HD Y.Pb.Pr) You can also press directly the “TV MODE” button on the remote controller to select output mode.
- **Aspect-ratio:** Select TV mode 4:3, 16:9 or 16:10.
- **HDMI:** Select the HDMI output resolution among 480i / 480p / 720p / 1080i / 1080p. Select the “Auto EDID”, the B1080PX-6 will scan the display device connected and set the correct resolution automatically.
- **SD Video:** Select the SD output mode. (“Video/ S-Video” or “Y.Cb.Cr”)
- **VGA 60Hz:** Select the VGA output resolution. (640x480 / 800x600/ 1024x768/ 1280x1024/ 1360x768/ 1680x1050/ 1920x1080/ 1920x1200)
- **HD Y.Pb.Pr 60Hz:** Select the Y.Pb.Pr output resolution among 480p / 720p / 1080i.

7.4 OTHER SETUP

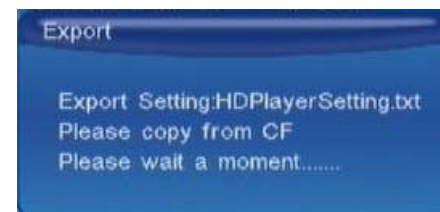


- **Play OSD Display:** Enable or disable the OSD display.
- **Auto Play**
 Movies: Auto play movie files on the CF card after power on.
 Pictures: Auto play picture files on the CF card after power on (slideshow function).
 All Files: Auto play all files (movie and picture files) on the CF card after power on.
 MultiLayer: Directly execute Multiple Display function after power on.
 Off: Turn off the Auto Play function.
- **SlideShow Interval:** Set the time each photo is shown to 10, 15, 30 seconds or 1, 10, 15, 30 minutes or 1 hour.
- **Lock Remote Controller:** Enable/ disable the auto key lock function. (The B1080PX-6 will auto lock when there is no further input for 1 minute.)
- **Lock Password Setup:** Press the “Enter” button to open the “Set Password” window. Enter the password with numeric buttons and press the “Enter” button to save the new password (The default password: 000).



7.4 OTHER SETUP (continued)

- **Export Setting File:** Press the “Enter” button to export the configuration value to the CF card.



Step1: Copy the file “HDPlayerSetting.txt” on CF card to your PC. Use the “Wordpad” to open the file, and you can see all the configuration value of B1080PX-6.

Step2: You can modify directly the configuration value on your PC.

Example: [NETWORK] Disable Options: Disable, RJ45, WiFi

The “Network” function is disabled, you can directly change the mode to RJ45.

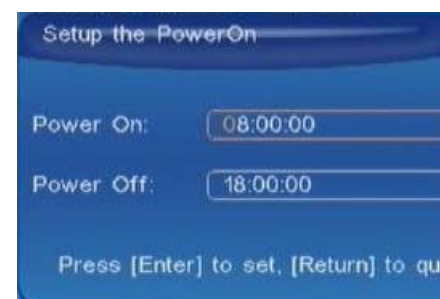
```
[NETWORK] Disable Options: Disable, RJ45, WiFi
[DHCP] On Options: On, Off
[IPAddress] 192.168.1.100 IPAddress
[Mask] 255.255.255.0 NetMask
[Gateway] 192.168.1.1 GateWay
[DNS] 168.95.1.1 DNS
```



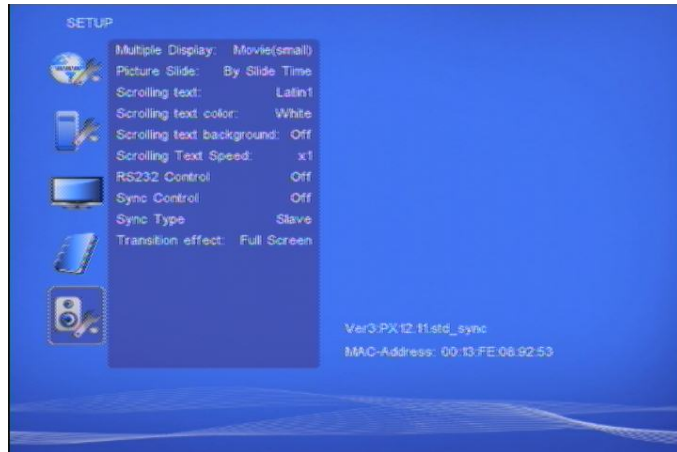
```
[NETWORK] RJ45 Options: Disable, RJ45, WiFi
[DHCP] On Options: On, Off
[IPAddress] 192.168.1.100 IPAddress
[Mask] 255.255.255.0 NetMask
[Gateway] 192.168.1.1 GateWay
[DNS] 168.95.1.1 DNS
```

Step3: Copy the completed file “HDPlayerSetting.txt” from PC to CF card. Insert the CF card to the B1080PX-6, the B1080PX-6 will apply the new settings automatically.

- **Play Button:** Only for used with play buttons. The B1080PX-6 supports two options (Repeat Default / Repeat All) when the demo file finishes playing.
- **Log Function:** Enable or disable the Log function.
- **Auto Power:** Enable or disable the Auto Power function. If this function is enabled, user might set a definite time for B1080PX-6 to power on/off automatically.
- **Auto Power Setting:** Press “Enter” button on the remote controller, the “Power On” setting window will pop up. User could set the power on/off time here.



7.5 Scrolling Text Setup



Multiple Display:

- **Movie (full):** Display videos (full screen) with scrolling text.
- **Movie (small):** Display videos (original size) with scrolling text.
- **Movie + PIC (L):** Play videos and pictures with scrolling text, and the pictures are on the left.
- **Movie + PIC (R):** Play videos and pictures with scrolling text, and the pictures are on the right.

Picture Slide: Set the mode of picture slideshow (By Slide Time/ Match Video).

Scrolling text: Select the font that the user wants to use in the scrolling text. Support fonts are: Latin1, Latin2, Japanese and Greek.

Scrolling text color: Select the color of the text; user might select white, yellow and green.

Scrolling text background: Turn on or off the background of the scrolling text.

Scrolling text speed: Adjust the speed of the scrolling text.

RS232 Control

- **Command:** Control the B1080PX-6 by using ASCII command.
- **Barcode:** Enable the Barcode function.
- **Off:** Turn off the RS232 control function.

Sync Control: Turn on/ off the Synchronized Playback function.

Sync Type: Set the Sync type (master/ slave) of B1080PX-6 (refer to section).

Transition effect: Set transition effects for your photo slideshow.

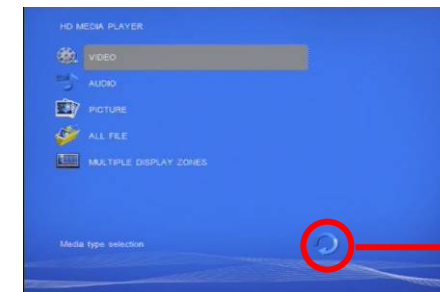
8. USING THE B1080PX-6


8.1 PLAY MEDIA FILES ON THE CF CARD

Step 1: Insert the CF card with media files, then turn on the B1080PX-6 and press the “ENTER” button on the remote control when “mnt/CF” is highlighted to take you into the CF card.

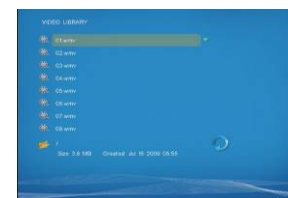


Step 2: Select the type of data (VIDEO/ AUDIO/ PICTURES) you want to play, and then press the “ENTER” button on remote control to take you into the “VIDEO LIBRARY”, “AUDIO LIBRARY” or “PICTURE LIBRARY”.

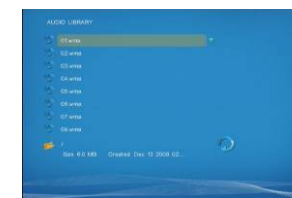


Note: If the symbol  (return) appears on the screen, you can use “RETURN” button of the remote control to go back one layer.

Step 3: Select the file you want to play, and press “ENTER” or “PLAY” button on the remote control to play the file.



VIDEO LIBRARY



AUDIO LIBRARY



PICTURE LIBRARY

8.1.1 Using the Remote Control When Media File Is Playing

- **SETUP:** Press the button to adjust the brightness, contrast or saturation while the **video** or **picture** is playing. With the “+ VOLUME –” button.

- **First Press:** Adjust the brightness.
- **Second Press:** Adjust the contrast.
- **Third Press:** Adjust the saturation.



Brightness

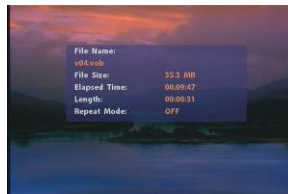


Contrast



Saturation

- **MUTE:** Mute the sound while the movie or music is playing.
- **+ VOLUME -:** Increase/ decrease the volume while the **video** or **music** is playing.
- **SHUFFLE:** Turn on/ off the shuffle function.
- **PREV / NEXT:** Play the previous/ next file.
- **REPEAT:** Select the repeat mode.
- **REV / FWD:** Rewind/ forward movie or music file.
- **STOP:** Stop playing, and go back one layer.
- **INFO:** Display the file information.



File Information

- **SERACH:** Search video (movie) timeframe
Press the “SEARCH” button, and enter the initial time that you want to start at, then press the “ENTER” button to play.



- **PAUSE/STEP:** Pause the playback or play frame by frame.
- **ZOOM:** Zoom in/ out on the movie or picture.



Original Size



First Press : ZOOM 01



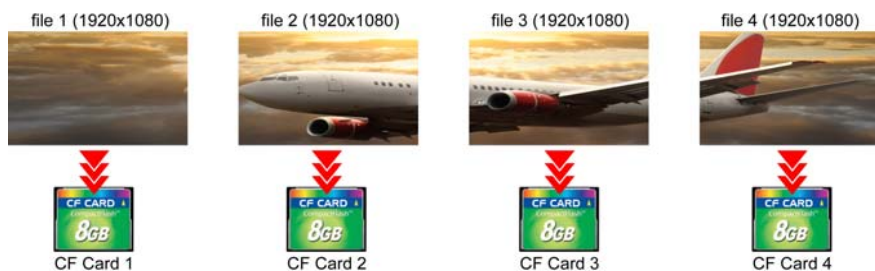
Second Press : ZOOM 02



Third Press : ZOOM 03

8.2 SYNCHRONIZED PLAYBACK FUNCTION

Step 1: Store four completed files to four CF cards separately.



Step 2: Insert four CF cards to four B1080PX separately.

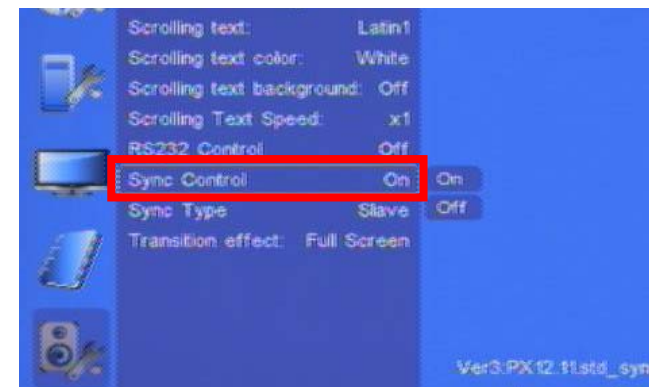


Step 3: Connect four B1080PX to an Ethernet hub or switch by using a standard Ethernet cable.

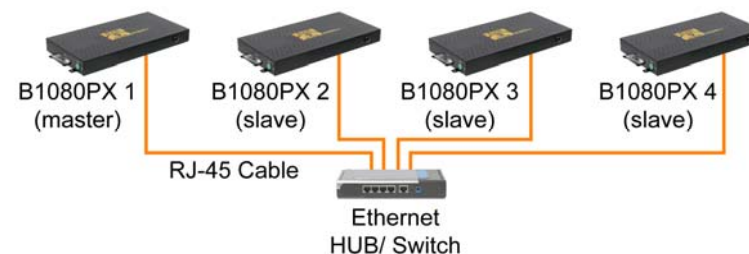
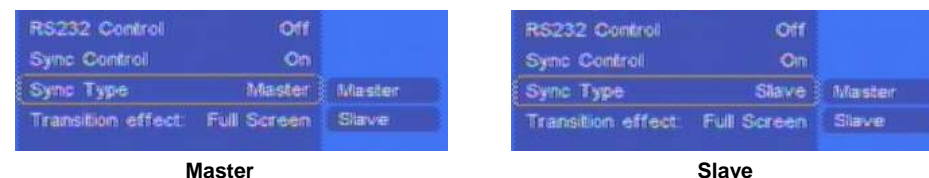
NOTE: If you have a DHCP-enabled Ethernet switch or router, it will automatically assigns IP address to four B1080PX. If you don't have a DHCP-enabled Ethernet switch or router, you must manually assign the IP address, Mask, Gateway and DNS for the B1080PX.



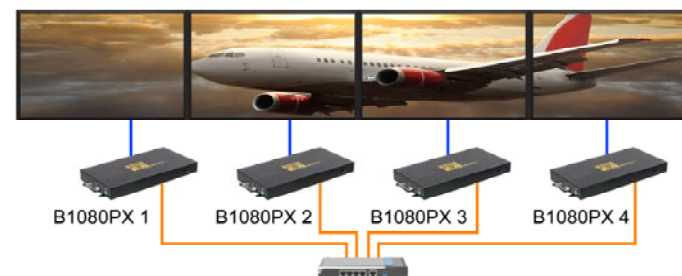
Step 4: Connect the power adapter to the B1080PX and turn on the power. Press the "SETUP" button on remote control to open the settings screen (If there is file that is being play, please stop first). Turn on the SYNC function.



Step 5: Set one as a master unit, and the others as slave units.



Step 6: Restart all the B1080PX, then the B1080PX will synchronize video playback.



8.3 MULTIPLE DISPLAY ZONES

Step 1: Put movies, pictures (only supports PNG format/ size: 213x641/ 96DPI) and text file on CF card.

Picture Files

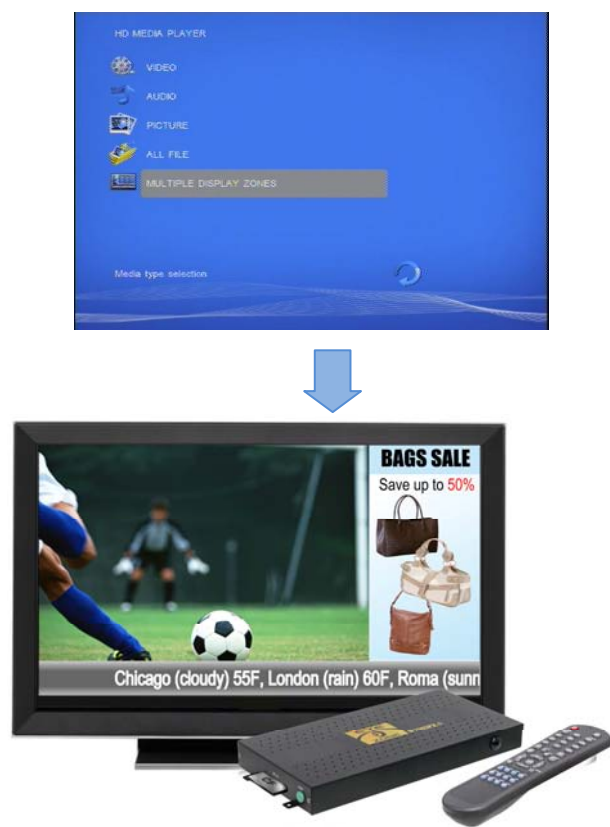
If you select the “By Slide Time” item of the picture slide mode; please name the picture files 0.png ~ 9.png.

If you select the “Match Video” item of the picture slide mode, the file name of the picture must be the same of the corresponding movie file.

Text File

Use the “Notepad” to create a text file on your PC. Enter the message that you want to display and named the file “message.txt”.

Step 2: Select the **Multiple Display Zones** item to display the movies and pictures with scrolling text immediately.



8.4 FTP AUTO DOWNLOAD FUNCTION

Step 1: Use the “Notepad” to create a commands file on your PC as shown below (you can refer to the sample file (d0013fe100000) on the provided CD):

```

d0013fe100000.txt - WordPad
File Edit View Insert Format Help
[Interval]
30 1

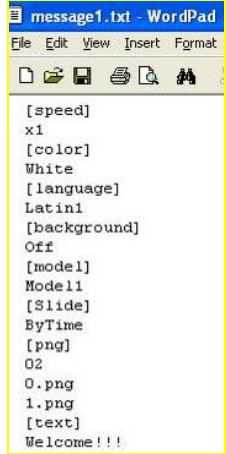
[dplay]
0

[time]
2009/08/21 18:40:01

[del]
on

[file]
001.mpg
002.mpg
0.png
1.png
schedule.ini
message1.txt
    
```

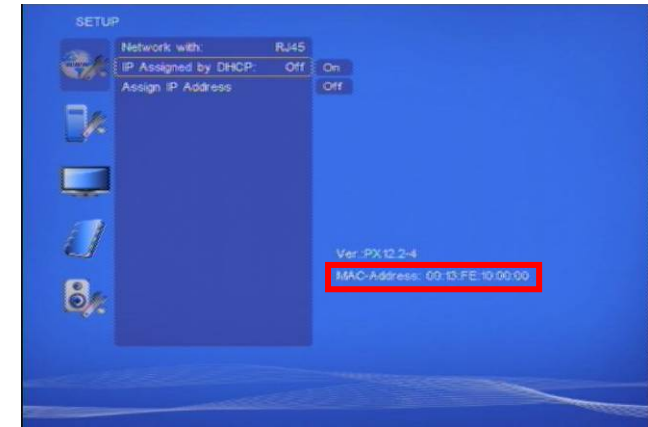
| Item | Description |
|----------------------------------|---|
| [Interval] 30 1 | <p>Initial time and interval time setting (for connecting to the FTP server and checking whether the commands file in the FTP)</p> <p>The first value is the Initial Time (unit: minutes)</p> <p>The second value is Interval Time (unit: minutes)</p> <p>Example 1: the current time of the B1080PX is 00:00 · and the entered value is 25 6.</p> <p>The B1080PX will connect to the FTP server and check whether the commands file in the FTP server at 00:25, then again every 6 minutes (00:31, 00:37, 00:43, 00:49, 00:55...).</p> <p>Example 2: the current time of the B1080PX is 00:10 · and the entered value is 45 15.</p> <p>The B1080PX will connect to the FTP server and check whether the commands file in the FTP server at 00:45, then again every 15 minutes (01:00, 01:15, 01:30, 01:45, 02:00...).</p> |
| [dplay] 0 | <p>Enable or disable the function (play files & FTP auto download simultaneously)</p> <p>0: Disable the function (the speed of download will be faster)</p> <p>1: Enable the function (the speed of download will be slower)</p> |
| [time] 2009/08/21 10:40:01 | <p>Set the time to restart the B1080PX after finish downloading (replace the downloaded files).</p> <p>NOTE:</p> <ol style="list-style-type: none"> Format: yyyy/mm/dd hh/mm/ss This field can not be blank; otherwise the B1080PX won't restart nor play the downloaded files. |
| [del] on | <p>Delete the original files on the CF card after finish downloading.</p> <p>on: Delete the original files on the CF card</p> <p>off: Keep the original files. The B1080PX will overwrite a file of the same name.</p> |

| Item | Description | | | | | | | | | | | | | | | | | | |
|--|---|------|-------------|---------------|---|------------------|--|----------------------|---|---------------------|---|-------------------|---|-------------------|---|-------------------------------|---|----------------------|--|
| [file] 001.mpg 002.mpg 0.png 1.png schedule.ini message1.txt | <p>Enter the filename you want to download.</p> <p>Note: The length of file name and extension cannot exceed 20 characters.</p> <p>The file schedule.ini is created by the Schedule Maker software. (refer to section 10)</p> <p>The file message1.txt is a text file that can change scrolling text settings. Use the "Notepad" to create the text file on your PC as shown below, and named the file message1.txt (you can refer to the text file (message1.txt) on the provided CD).</p> <table border="1"> <thead> <tr> <th>Item</th> <th>Description</th> </tr> </thead> <tbody> <tr> <td>[speed] X1</td> <td>Set the display speed of the scrolling text. Please enter X1, X2 or X3.</td> </tr> <tr> <td>[color] White</td> <td>Set the scrolling text color. Please enter White, Yellow, Green or Rotation.</td> </tr> <tr> <td>[language] Latin1</td> <td>Set the font of scrolling text. Please enter Latin1, Latin2, Japanese or Greek.</td> </tr> <tr> <td>[background] Off</td> <td>Enable or disable the scrolling text background. On: Enable the background. Off: Disable the background.</td> </tr> <tr> <td>[model] Model1</td> <td>Set the model of the multiple display zone. Model1: Play videos with scrolling text. Model2: Play videos, pictures and scrolling text simultaneously, and the pictures are on the left. Model2: Play videos, pictures and scrolling text simultaneously, and the pictures are on the right.</td> </tr> <tr> <td>[Slide] ByTime</td> <td>Set the picture slideshow mode. ByTime: Change the pictures with the internal time. MatchVideo: Change the pictures with the videos.</td> </tr> <tr> <td>[png] 02 0.png 1.png</td> <td>Enter the quantity and filename of pictures. 02: The first value is the quantity of picture. Example: If there are two pictures. Please enter 02, and then enter the filename of the two pictures (0.png and 1.png).</td> </tr> <tr> <td>[text] Welcome!!!</td> <td>Enter the message that you want to display.</td> </tr> </tbody> </table>  | Item | Description | [speed] X1 | Set the display speed of the scrolling text. Please enter X1, X2 or X3. | [color] White | Set the scrolling text color. Please enter White, Yellow, Green or Rotation. | [language] Latin1 | Set the font of scrolling text. Please enter Latin1, Latin2, Japanese or Greek. | [background] Off | Enable or disable the scrolling text background. On: Enable the background. Off: Disable the background. | [model] Model1 | Set the model of the multiple display zone. Model1: Play videos with scrolling text. Model2: Play videos, pictures and scrolling text simultaneously, and the pictures are on the left. Model2: Play videos, pictures and scrolling text simultaneously, and the pictures are on the right. | [Slide] ByTime | Set the picture slideshow mode. ByTime: Change the pictures with the internal time. MatchVideo: Change the pictures with the videos. | [png] 02 0.png 1.png | Enter the quantity and filename of pictures. 02: The first value is the quantity of picture. Example: If there are two pictures. Please enter 02, and then enter the filename of the two pictures (0.png and 1.png). | [text] Welcome!!! | Enter the message that you want to display. |
| Item | Description | | | | | | | | | | | | | | | | | | |
| [speed] X1 | Set the display speed of the scrolling text. Please enter X1, X2 or X3. | | | | | | | | | | | | | | | | | | |
| [color] White | Set the scrolling text color. Please enter White, Yellow, Green or Rotation. | | | | | | | | | | | | | | | | | | |
| [language] Latin1 | Set the font of scrolling text. Please enter Latin1, Latin2, Japanese or Greek. | | | | | | | | | | | | | | | | | | |
| [background] Off | Enable or disable the scrolling text background. On: Enable the background. Off: Disable the background. | | | | | | | | | | | | | | | | | | |
| [model] Model1 | Set the model of the multiple display zone. Model1: Play videos with scrolling text. Model2: Play videos, pictures and scrolling text simultaneously, and the pictures are on the left. Model2: Play videos, pictures and scrolling text simultaneously, and the pictures are on the right. | | | | | | | | | | | | | | | | | | |
| [Slide] ByTime | Set the picture slideshow mode. ByTime: Change the pictures with the internal time. MatchVideo: Change the pictures with the videos. | | | | | | | | | | | | | | | | | | |
| [png] 02 0.png 1.png | Enter the quantity and filename of pictures. 02: The first value is the quantity of picture. Example: If there are two pictures. Please enter 02, and then enter the filename of the two pictures (0.png and 1.png). | | | | | | | | | | | | | | | | | | |
| [text] Welcome!!! | Enter the message that you want to display. | | | | | | | | | | | | | | | | | | |

Step2: Remember to save the file after editing, and named the command file **d + MAC address.txt**.

Example: The MAC address of B1080PX is 0013fe100000, and named the file **d0013fe100000.txt**.

NOTE: The MAC address of B1080PX will be displayed in the setup menu.



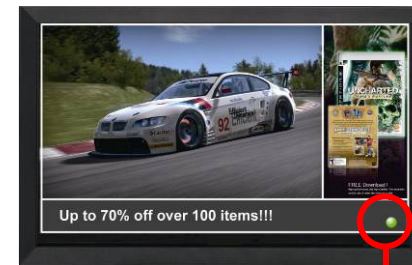
Step3: Put all the files (included media files/ command file (ex. d0013fe100000.txt/ schedule.ini/ message1.txt) to the FTP server. The B1080PX will read the command file (ex. d0013fe100000.txt), and download the specified files.

NOTE: The filename of the media files in FTP server cannot have any spaces.

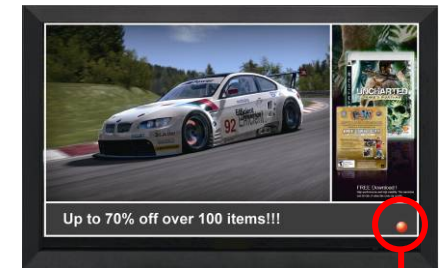
Step4: The download status will be displayed in lower right corner of the screen

Blinking Green Light: Indicate the B1080PX is downloading.

Blinking Red Light: The connection to the FTP server has failed.



Blinking Green Light



Blinking Red Light

8.5 RS-232 FUNCTION (RS-232 cable is optional)

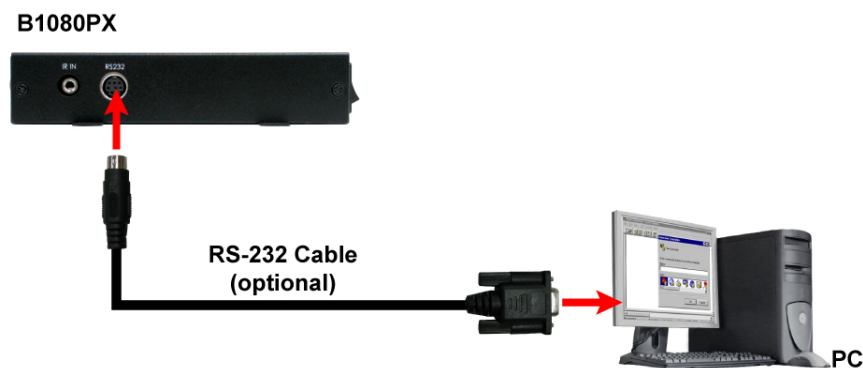
Use the tool "Tera Term" or other tools to control the B1080PX-6 with ASCII command.

NOTE. 1. The available baud rates is "19200".

2. The reaction time of B1080PX-6 is around three seconds.

3. Make sure the RS232 function is enabled (refer to section 7.5).

- Using the RS-232 cable (optional) to connect the B1080PX-6 to your PC.



Keyboard Layout

| | | |
|---|----------------|-----------|
| q : POWER | + : VOL + | w : SLOW |
| R : RETURN | - : VOL - | > : NEXT |
| ! : REPEAT | * : MUTE | < : PREW |
| ~ : SETUP | S : SELECT | u : UP |
| # : TV MODE | p : PLAY | d : DOWN |
| % : AutoPlay | P : PAUSE/STEP | l : LEFT |
| i : INFO | x : STOP | r : RIGHT |
| m : NTSC/PAL | f : FFW | s : ENTER |
| \$: SEARCH | b : REW | C : CLEAR |
| (XXXXX.XXX) : Play The File (xxxxx.xxx is the file name) | | |
| NOTE : Must include the round brackets. | | |
| [number]: Play the file by index. (numbers < upper case letters < lowercase letter) | | |

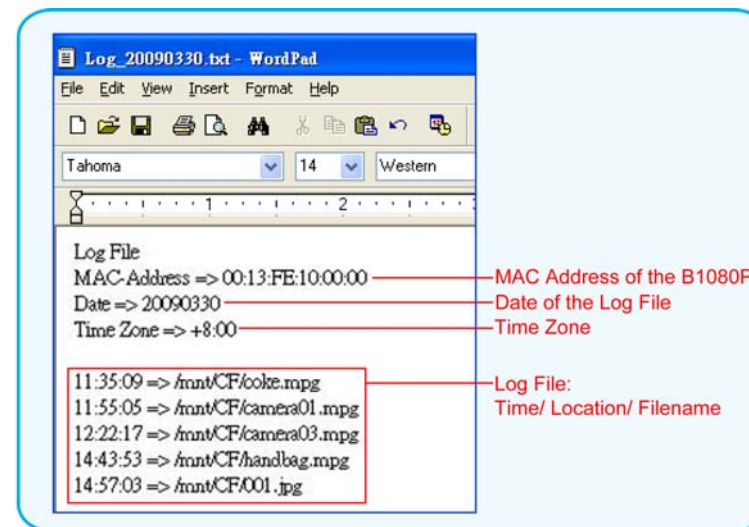
8.6 LOG FUNCTION

Step1. Please turn on the **Log Function** first. (Refer to 7.4 Other Setup)

Step2 .The new log files are automatically generated every day. The log file contains media filename and start time of playback.

NOTE: The log files will be stored on the CF card and uploaded to the specified FTP server.

Step3. The log file (.txt) can be viewed on your PC using **WordPad**.



9. HTTP COMMAND FUNCTION

- Confirm that the B1080PX-6 is already connected to the network. (Refer to 7.1)
- Confirm the “Local HTTP Server” function has been enabled, and the “Local HTTP Server Setup” set has been completed (refer to 7.2).
- Set your router or firewall, and open a port 80 for the B1080PX-6. The following figure is an example, please refer to your user’s manual of router for opening ports.



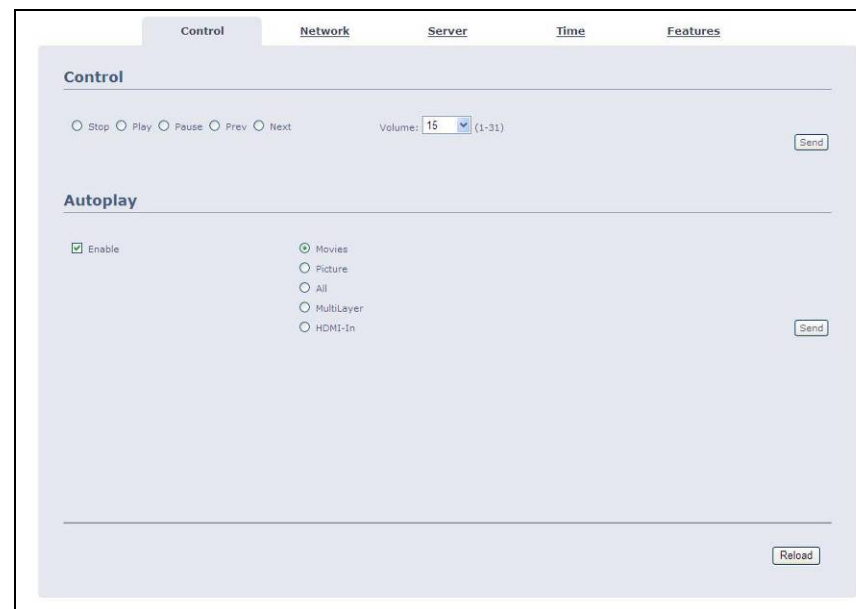
- **Start IE Browser on PC and type the HTTP site or IP:**
 In the local PC, please type “http://192.168.1.100”.
 In the remote PC, please type “http://61.30.13.40:80”.
- Type the “User Name”, “Password” and click “OK” to log on. (Default User Name: root Default Password: admin)



- There are five items: “Control”, “Network”, “Server”, “Time” and “Features”



9.1 CONTROL



- **Control:** Select one of the control commands, and press the “Send” to control the B1080PX-6 immediately.
 - **Stop:** Stop playback
 - **Play:** Start playback.
 - **Pause:** Pause the playback.
 - **Prev:** Play the previous file.
 - **Next:** Play the next file.
 - **Volume:** Adjust the volume.
- **Autoplay:** Select the auto play mode.
 - **Enable:** Enable or disable the auto play function.
 - **Movies:** Auto play movie files on the CF card after power on.
 - **Pictures:** Auto play picture files on the CF card after power on (slideshow function).
 - **All:** Auto play all the media files on the CF card after power on.
 - **Multi Layer:** Directly execute Multiple Display function after power on
 - **HDMI In:** Auto play the video from HDMI source after power on (only for B1080PX-4).

9.2 NETWORK

■ Network

- **Enable:** Enable or disable the network function.
- **Interface:** Select your network connection Ethernet (wired) or Wireless.

■ General Setup

- **Enable DHCP:** Enable or disable the DHCP function.
- **IP/ Subnet/ Gateway/ DNS server:** Enter the fixed IP address, Subnet, Gateway and DNS for the B1080PX-6.

■ Wireless Setup (only for B1080PW)

- **SSID:** Enter the SSID.
- **Encryption mode:** Select an encryption mode.
- **Key/ Passphrase:** The key you enter here must match the password of the device exactly.

9.3 SERVER

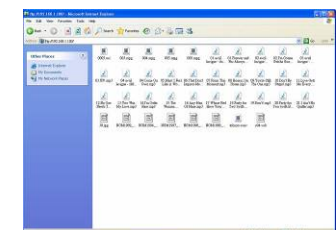
■ Download from FTP Server

- **Enable:** Enable or disable the FTP auto download function.
- **Port:** The default port for FTP is 21. In most cases you should not change this number. If the FTP site uses a port other than 21, you should enter the correct port.
- **IP address:** Enter the domain name or IP address of the remote FTP server.
- **Path:** Enter the folder path that you want to share.
- **User name:** Enter the user name of the remote FTP server.
- **Password:** Enter the password of the remote FTP server.

■ Local FTP Server Setup

- **Enable:** Turn on/ off the B1080PX-6 server.
- **Port:** Enter the port of the B1080PX-6
- **ID:** Enter the user name of the B1080PX-6 (**default ID: root**).
- **Password:** Enter the password of the B1080PX-6 (**default password: admin**).

- **FTP Server Address:** Click on the address to directly connect to the B1080PX-6 server. Enter the user name and password (Default User Name: **root**, Default Password: **admin**) to log on. After logging on all the media files on the CF card will be listed. You can download and upload the media files between CF card and your PC.



9.4 TIME

The screenshot shows the 'NTP Server' configuration page. At the top, there are tabs for 'Control', 'Network', 'Server', 'Time', and 'Features'. The 'Time' tab is selected. The page has a title 'NTP Server'. Below the title, there is a checkbox labeled 'Enable' which is checked. To the right of the checkbox, there are four input fields for the GMT Server IP address, containing the values '66', '187', '233', and '4'. Below these fields, there are two input fields for the Time Zone, labeled 'hours' and 'min', containing the values '+8' and '0'. There is a 'Send' button to the right of the Time Zone fields. At the bottom right of the page, there is a 'Reload' button.

■ NTP Server

- **Enable:** Enable or disable the NTP server function.
- **GMT Server:** Enter the NTP server IP address like: 66.187.233.4.
- **Time Zone:** Set the time zone of your location.

9.5 FEATURES

The screenshot shows the 'Web Interface' configuration page. At the top, there are tabs for 'Control', 'Network', 'Server', 'Time', and 'Features'. The 'Features' tab is selected. The page has a title 'Web Interface'. Below the title, there is a checkbox labeled 'Enable' which is checked. To the right of the checkbox, there are three input fields: 'Port' with the value '80', 'User ID' with the value 'root', and 'Password' with masked characters '.....'. There is a 'Send' button to the right of the Password field. Below this section, there is a section titled 'Scrolling Text' with a large text input field and a 'Send' button to its right. At the bottom right of the page, there is a 'Reload' button.

■ Web Interface

- **Enable:** Enable or disable the HTTP command function.
 - **Port:** Enter the port of the B1080PX-6 (**default port: 80**)
 - **User ID:** Enter the user name of the B1080PX-6 (**default ID: root**).
 - **Password:** Enter the password of the B1080PX-6 (**default password: admin**).
- **Scrolling Text:** Enter the message that you want to display, and press "Send" to display the scrolling text message on the screen immediately (the message you entered through the http function will not be stored on CF card).

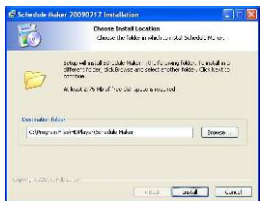
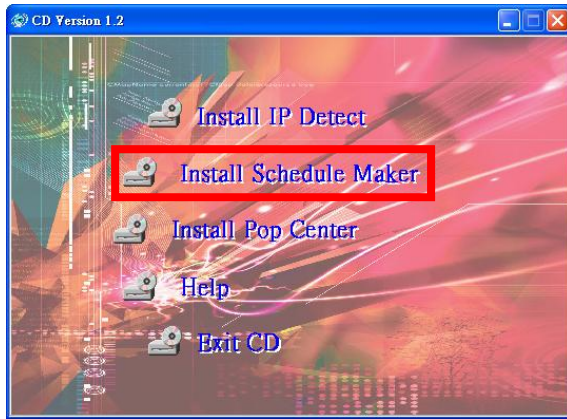
10. SCHEDULE FUNCTION

NOTE: The “NTP Server” or “Local Time” must be set before using the Schedule Function. (refer to 7.2)

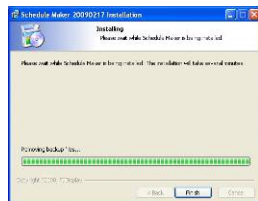
10.1 INSTALL THE SCHEDULE SOFTWARE

Step1: Insert the driver CD into your CD-ROM drive, then the autorun function will start up the shell program. If the autorun window does not display, please execute the Autorun.exe program to bring out the autorun screen.

Step2: Click on the **Install Schedule Maker** to install the schedule software.




Select the installation folder and click **Install** to continue



Installing

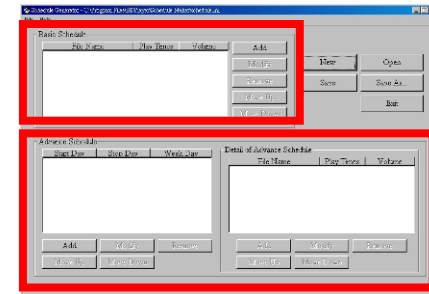


Click **Finish** to complete the installation

Step3: After installing the schedule software, the “Schedule Maker” icon () should appear on your desktop. Or you could also find the shortcut of “Schedule Maker” by click on < Start > → < Programs > → < Schedule Maker 20090217 > → < Schedule Maker >.

10.2 START THE SCHEDULE SOFTWARE

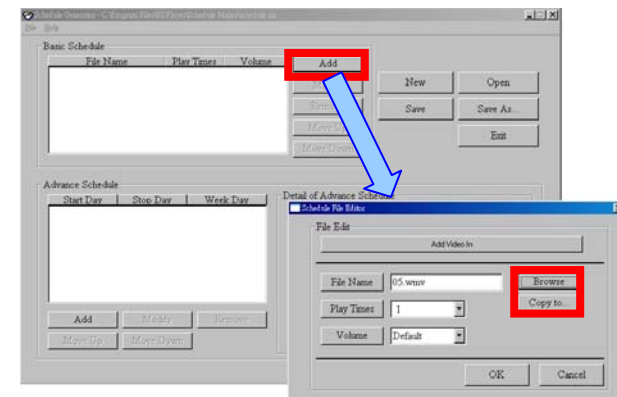
- You might double click the “Schedule Maker” icon on your desktop for opening the “Schedule Generator”. Or you might click on <Start> → <Programs> → <Schedule Maker 20090217> → <Schedule Maker > for starting the program.
- There are two parts of program: “Basic Schedule” and “Advance Schedule” in the window.



10.2.1 Basic Schedule

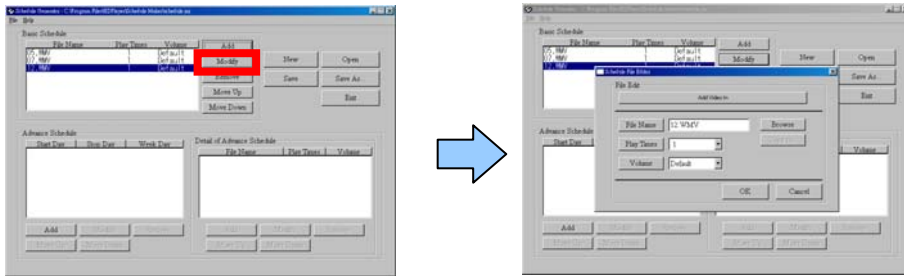
In the “Basic Schedule” mode, you could arrange a basic schedule that instructs the player to play specified video files in the ordinary time. You could also set up the play times of each video file on the schedule.

- Add:** Click this button to chose a video file. The following diagram appears:
 - Click on “**Add Video In**” button for instructing the player to play the HDMI input only (only for B1080PX-4).
 - Click the “**Browser**” button to search for files that you want to add. You can also set up the “Play Times” and “Volume” of the file in this window. Click the “**OK**” button to complete the setup.
 - Click the “Add” button again to add other file. If you choose “Video In” in the previous step, the “Add” button will be blank. That means you want the player to play the “Video In” in the ordinary time. And if you’d like the player switching between the “Video In” and video files in the specific time, you might combine a Video In Basic Schedule with an Advance Schedule function.
 - COPY Function:** Click the “**Copy to...**” button to copy directly the added file to the memory card.



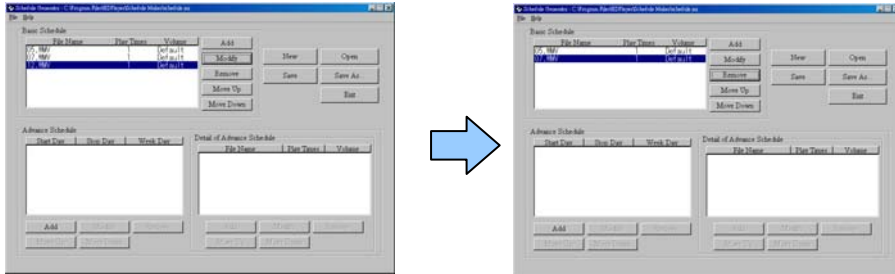
■ **Modify:** Click this button to modify the file in the list.

- Select the file that you want to modify in the list, and press the **“Modify”** button.

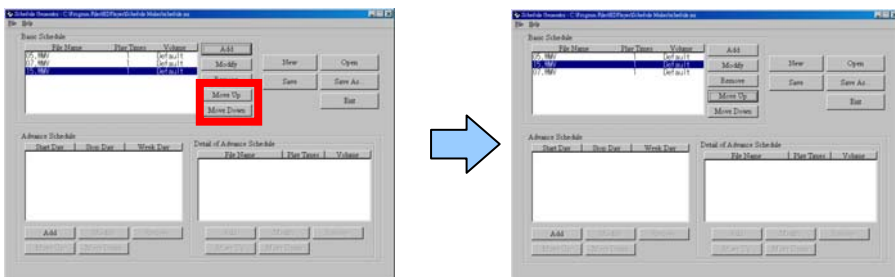


■ **Remove:** Click this button to remove the file from the list.

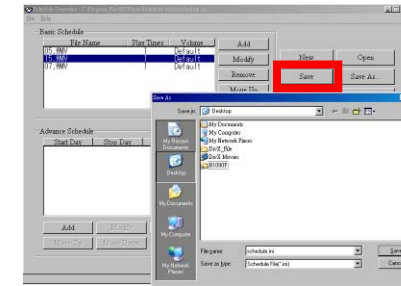
- Select the file that you want to remove from the list, and press the **“Remove”** button to delete.



■ **Move Up / Move Down:** Click these buttons to change the order that the files are played.



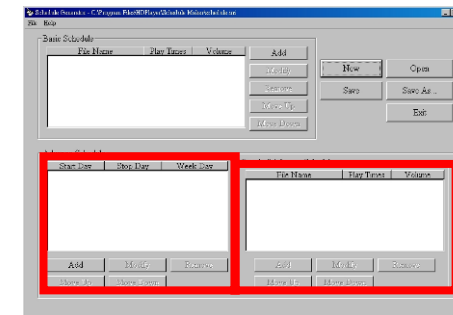
Press the **“SAVE”** button and a pop-up window will appear. Select the path, then click the **“SAVE”** button to save your setup.



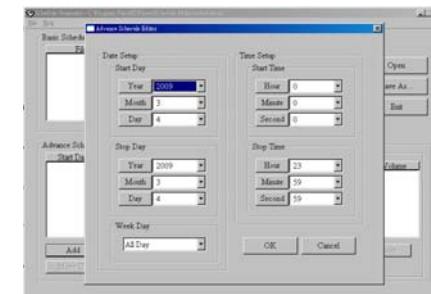
NOTE: Do not rename the file (schedule.ini), otherwise the B1080PX-6 will not be able to read the file.

10.2.2 Advance Schedule

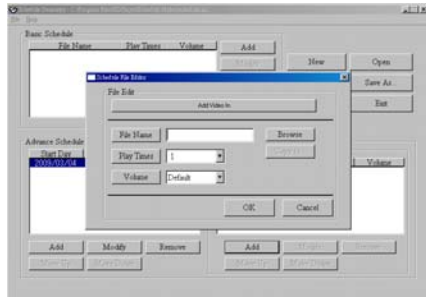
In the **“Advance Schedule”** mode, you can select files that you want to play, and can also set up the play times, and the initial and end time of each file. There are **“Time Setup”** and **“File Setup”** in the **“Advance Schedule”**.



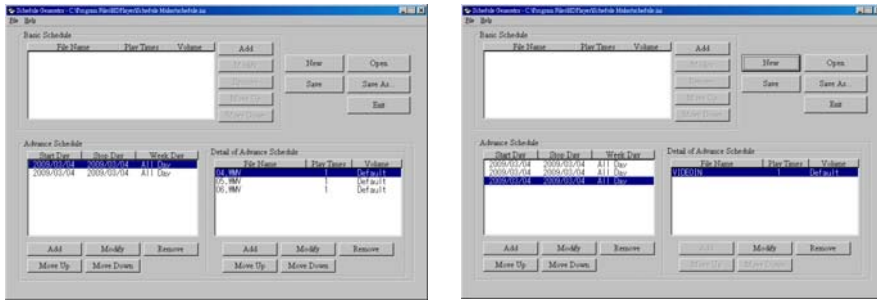
Step 1: Click the **“Add”** button in the **“Time Setup”** section to open the **“Advance Schedule Editor”** window. Set up the Start and Stop Date, Start and Stop Time and the Week Day, then click **“OK”** to quit the window.



Step 2: Click the “Add” button in the “File Setup” section to open the “Schedule File Editor” window. Click the “Browser” button to select a file that you want to play. You can also set up the “Play Times” of the file in the window. Click the “OK” button to complete the setup.



Step 3: Repeat the steps 1 and 2 to add other files.



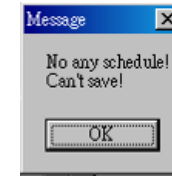
Step 4: After finishing all setup, press the “SAVE” button and a pop-up window will appear. Select the path, then click the “SAVE” button to save.

NOTE: Do not rename the file (schedule.ini), otherwise the B1080PX-6 will not be able to read the file.

10.2.3 Explanation of the Warning Message

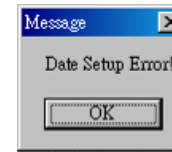
■ No any schedule! ! Can't Save!

There is no schedule file in the “Basic Schedule” or “Advance Schedule” can be saved. Please add and edit a new schedule file first.



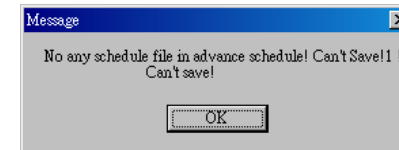
■ Date Setup Error!

There are some errors in the “Advance Schedule”. Check the date/ time of the schedule for conflict or error.



■ No any schedule file in advance schedule! ! Can't Save! !

There is no schedule file in the advance schedule. Please add files that you want to play in the advance schedule.



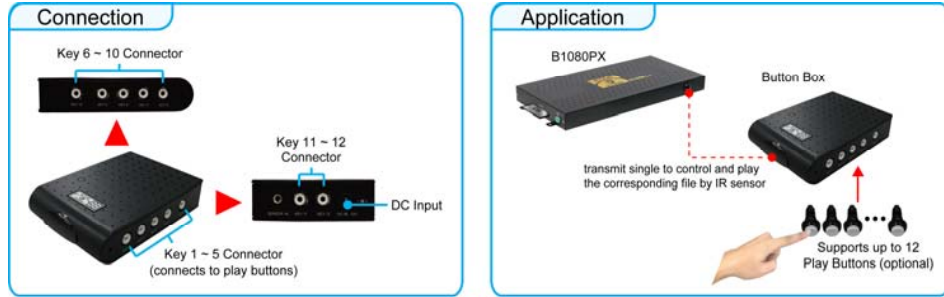
10.3 APPLY THE SCHEDULE ON THE B1080PX-6

Put the “schedule.ini” file and the associated media files on the memory card, and insert the memory card to the B1080PX-6. The B1080PX-6 will auto play the files at the designated time.

11. OPTIONAL AUXILIARY EQUIPMENT

11.1 PLAY-BUTTON BOX (Eyezone BB)

- The Play Button Box (Eyezone BB) supports up to 12 play-button inputs.
- Press one of the play buttons to play the corresponding file.
- **Hardware Connection**



- **Play the Media File By the Play-Button**
ex. 5 Play-Buttons (supports up to 12 play buttons)

Step 1: Put 6 demo files on CF card. (1 default file and 5 demo files)

NOTE: The files are sorted by filename in ascending order alphanumerically (numbers < upper case letters < lowercase letter). Each button is mapped to a file by this order.

For Example :

There are 6 demo files on the CF card. The file names are a01.xxx, 33.xxx, b55.xxx, 1abc.xxx, 07.xxx and A01.xxx. (xxx is extension of the file)

Default File : 07.xxx Demo File 1 : 1abc.xxx Demo File 2 : 33.xxx
Demo File 3 : A01.xxx Demo File 4 : a01.xxx Demo File 5 : b55.xxx

Step 2: Insert the CF card to the B1080PX-6, and the B1080PX-6 will play the default file automatically while powered on.

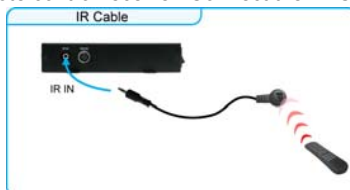
Step 3: Press one of the buttons 1-5 to play the corresponding demo file.

Step 4: The B1080PX-6 supports two options (Repeat Default / Repeat All) when the demo file finishes playing. The functions can be set in the setup menu. (Other Setup → Play Button)

- **Repeat Default:** The B1080PX-6 will automatically play the default file when the demo file finishes playing.
- **Repeat All:** The B1080PX-6 will automatically play all the demo files when the demo file finishes playing.

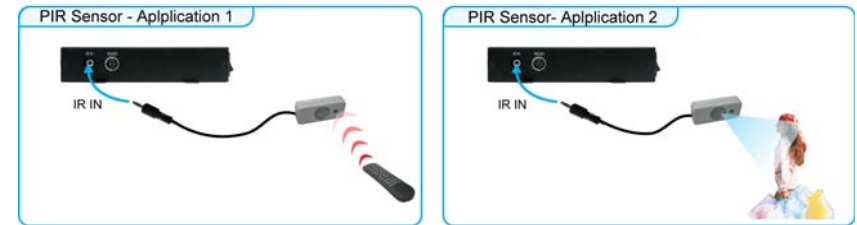
11.2 IR Cable

The IR cable is an external remote control receiver. Connect the IR Cable to the IR input.



11.3 PIR SENSOR (Eyezone PIR)

- **Application 1:** The Eyezone PIR is an external remote control receiver.
- **Application 2:** The Eyezone PIR is a motion detector.



11.3.1 Using the PIR Sensor

Step 1: Set the repeat mode to the "Repeat Default".



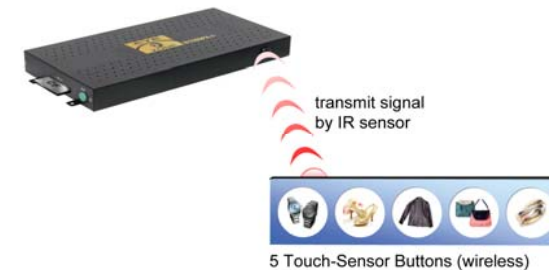
Step 2: Insert the CF card to the B1080PX-6, and the B1080PX-6 will play the default file automatically while powered on.

Step 3: After sensing approaching subjects, the B1080PX-6 will play all the demo files once.

11.4 TOUCH-SENSOR BUTTONS

11.4.1 Features of the Touch-Sensor Buttons

- The number of touch-sensor buttons can be customized to 12, 24 or 36 for OEM project.
- Used with various operating environment (glass, plastics and acrylic material, except metal material), the thickness supports 3mm -5mm, and it can be customized to 5cm for OEM project.



11.4.2 Demo Files

Ex. Using the wireless 5 Touch-Sensor Buttons

- Put 6 demo files on CF card. (1 default file and 5 demo files)

NOTE: The files are sorted by filename in ascending order alphanumerically (numbers < upper case letters < lowercase letter). Each button is mapped to a file by this order.

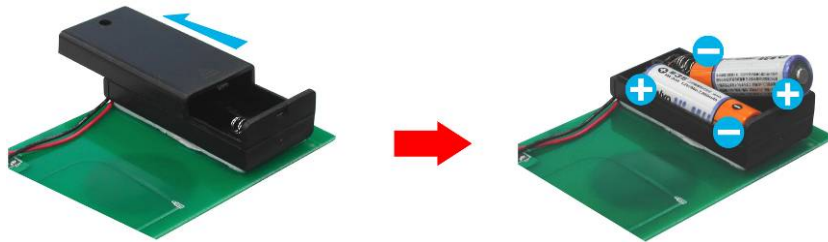
For Example :

There are 6 demo files on the CF card. The file names are a01.xxx, 33.xxx, b55.xxx, 1abc.xxx, 07.xxx and A01.xxx. (xxx is extension of the file)

Default File : 07.xxx Demo File 1 : 1abc.xxx Demo File 2 : 33.xxx
 Demo File 3 : A01.xxx Demo File 4 : a01.xxx Demo File 5 : b55.xxx

11.4.3 Connect to the Touch-Sensor Buttons

- Open the battery cover and set the batteries (AA size) as shown below. Please note that the polarity of the battery.



11.4.4 Play the Demo Files

Step 1: Insert the CF card to the B1080PX-6, and the B1080PX-6 will play the default file automatically while powered on.

Step 2: Press one of the touch-sensor buttons 1-5 to play the corresponding demo file.

Step 3: The B1080PX-6 supports two options (Repeat Default / Repeat All) when the demo file finishes playing. The functions can be set in the setup menu. (Other Setup → Play Button)

- **Repeat Default:** The B1080PX-6 will automatically play the default file when the demo file finishes playing.
- **Repeat All:** The B1080PX-6 will automatically play all the demo files when the demo file finishes playing.

12. TROUBLESHOOTING

| Situation | Check Point |
|--|--|
| No Picture | <ol style="list-style-type: none"> 1. Check power cable and power switches. 2. Ensure the video cables are connected between the player and the B1080PX-6. 3. Press the "TV MODE" button on the remote control to select the correct output mode. 4. Make sure the file format on the CF card is correct. 5. Check if the display device is switched to correct video input source. |
| No Response From the Remote Control | <ol style="list-style-type: none"> 1. Check that the batteries (2 batteries (AAA size) for the remote control is installed correctly. 2. Check that there are no obstacles between the remote control and the remote control sensor window. |
| No sound | <ol style="list-style-type: none"> 1. Check if the mute function is on. 2. Check if the volume is set properly. 3. Check if audio cable has been connected correctly. |
| No Responding while pressing the wireless touch – sensor buttons | <ol style="list-style-type: none"> 1. Confirm the polarity of the battery. 2. Check that there are no obstacles between the touch-sensor buttons and the sensor window. |
| Network Not Working | <ol style="list-style-type: none"> 1. Check your IP settings on the Network Setup page. (refer to 7.1) 2. If using wired network, make sure the network cable is plugged in on both the B1080PX-6 and your network hub. |